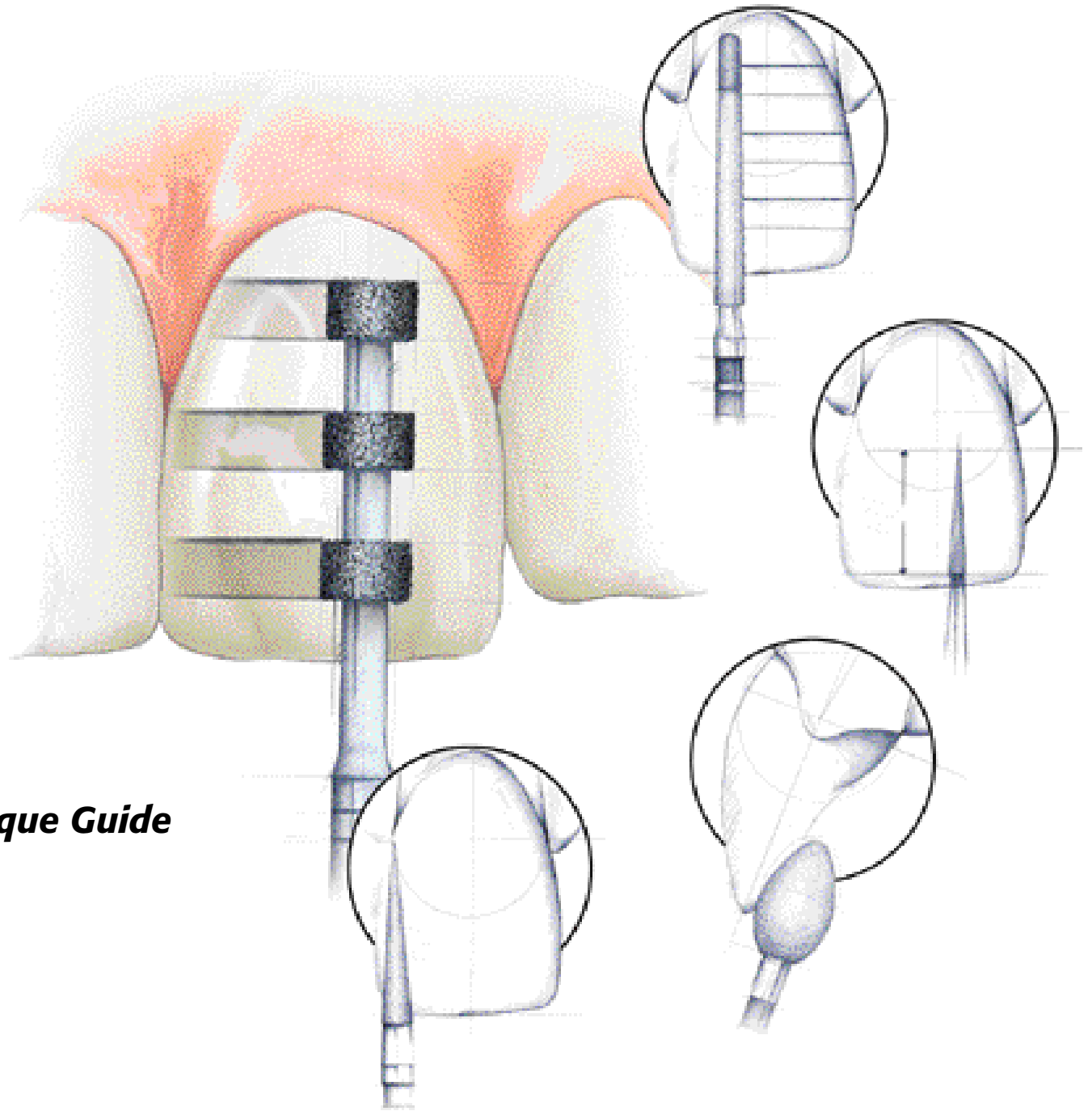


Laminate Veneer Preparation and Finishing



Technique Guide

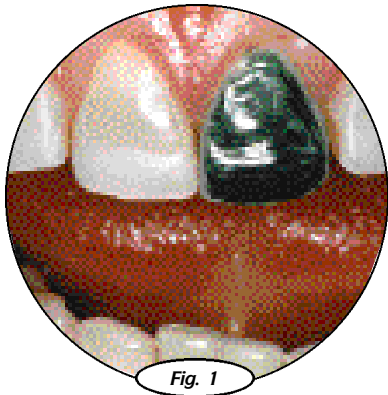
Consistently. Rationally. Systematically.

Buy Direct. Buy Brasseler USA.

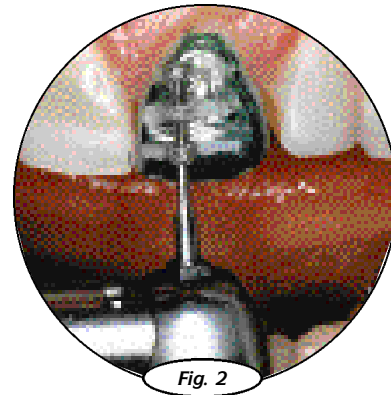


Brasseler USA Laminate Veneer System

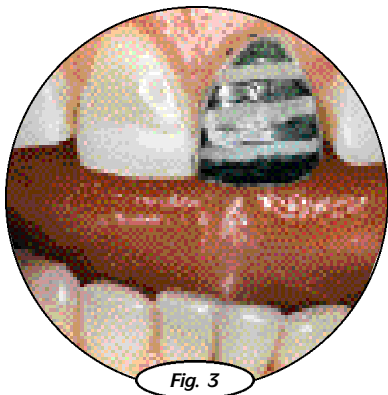
Designed for rapid and predictable preparation of enamel for porcelain veneering.



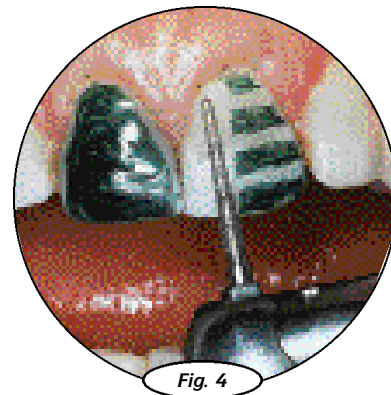
Preoperative view of tooth stained for demonstration prior to preparation for porcelain laminate veneer.



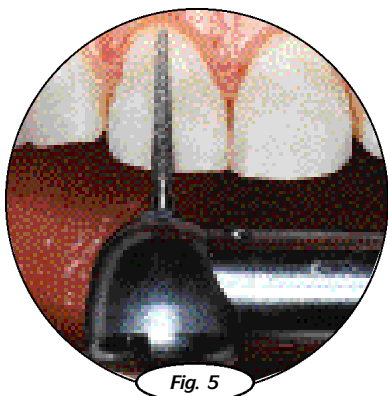
Position LVS1 (.5mm) or LVS2 (.3mm) depth cutters so that the three striations are evenly placed across the labial surface of incisor.



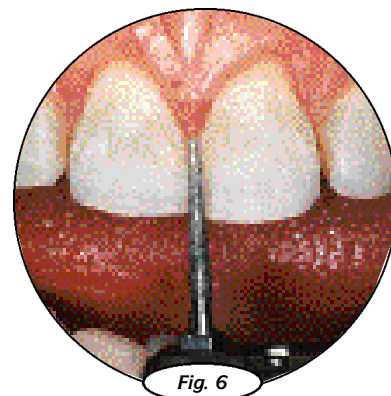
Move the LVS depth cutter across the labial surface—developing the striations. The depth cutter has been specifically designed so that placement in the middle and incisal third of the tooth will result in a shallower reduction in the cervical third of the tooth where the enamel is thinner.



View shows initial reduction with depth cutter and preparation on mesial half of tooth with coarse grit of the two grit diamond LVS3, following contour of gingival margin.



Next use the appropriate size of two grit diamond LVS3 or LVS4, (red & green band) to reduce the remaining enamel to the depth of the striations.



In addition to reducing the remaining enamel with the coarse part of the diamond, the fine grit on the tip establishes the finish line of the gingival and proximal margins.

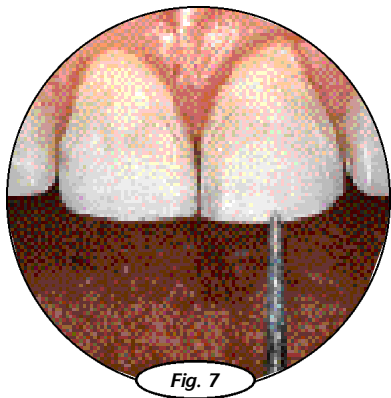


Fig. 7

This photograph shows the completed preparation following gingival retraction.

Note the even overall reduction developed utilizing the depth cutter and the specific form of the modified chamfer margins created by the two grit diamond. The same instrument is used for the incisal finish line. Tissue is slightly displaced for purpose of direct vision and isolation of margin during impressions and seating.

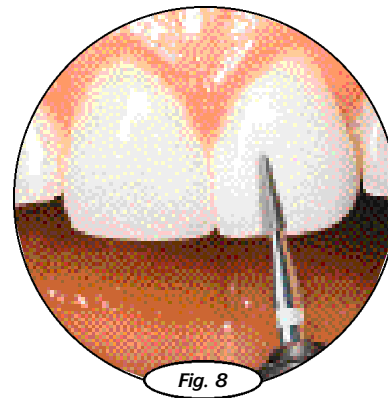


Fig. 8

Any excess composite resin luting material is removed with a LVS5 (white band) carbide bur.

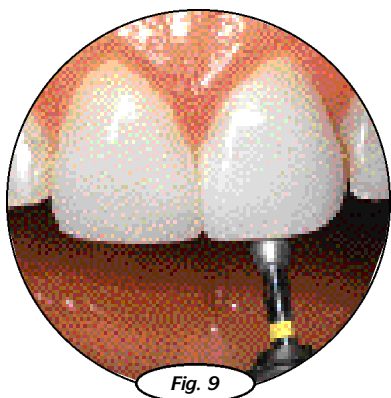


Fig. 9

The linguo/incisal aspect of the restoration is finished utilizing the LVS8 (yellow band) extra-fine diamond.

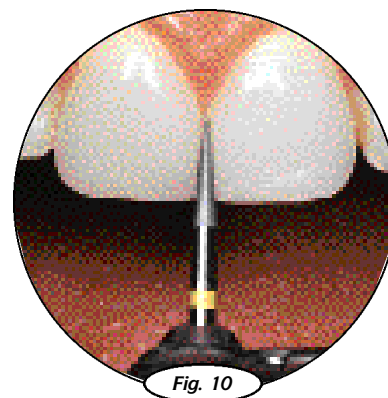
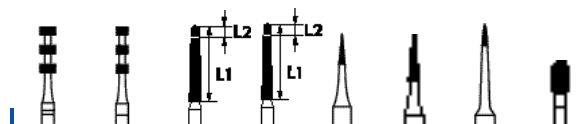


Fig. 10

If it is necessary to reduce excess porcelain at the margin following luting, utilize the LVS6 or LVS7 (yellow band) extra-fine diamonds.



4151



| US No. | LVS1 | LVS2 | LVS3 | LVS4 | LVS5 | LVS6 | LVS7 | LVS8 | | |
|-----------|-----------|------|--------------------------|--------------------------|--------|-------|-------|-------|-----|-----|
| Order No. | 834 | 834 | 6844 | 6844 | H133UF | 134EF | 132EF | 379EF | | |
| Size | Ø 1/10 mm | | 021 | 016 | 016 | 014 | 010 | 014 | 008 | 023 |
| L mm | - | - | L=10 L ² =1.5 | L=10 L ² =1.5 | 4.2 | 6.0 | 3.0 | 4.2 | | |
| Depth | .5mm | .3mm | - | - | - | - | - | - | | |

Laminate Veneer Preparation System

Developed by Dr. Ronald E. Goldstein

Preparation and finishing system for veneer restorations.

Friction Grip 31 —
Ø1.60mm x 19mm L



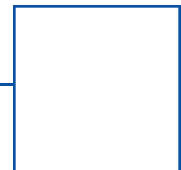
Brasseler USA

One Brasseler Blvd.
Savannah, GA 31419

Toll Free: 800.841.4522

Phone: 912.925.8525

Fax: 888.610.1937



Buy Direct. Buy Brasseler USA.

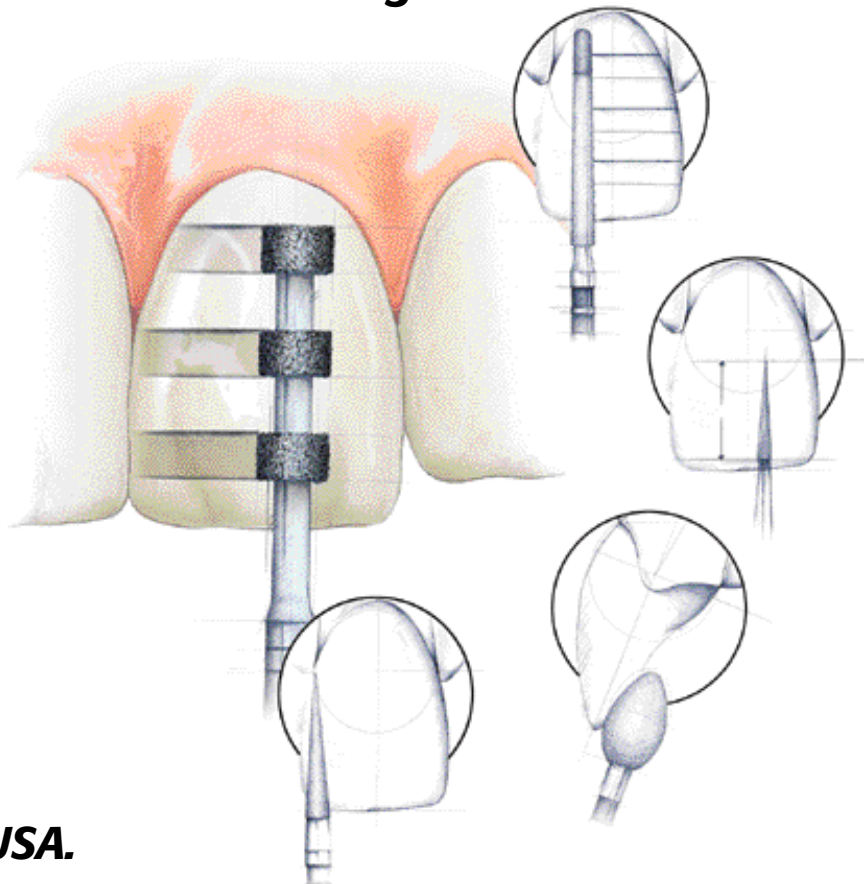
©2002 Brasseler USA



B-1885-01.02-KPC

Laminate Veneer Preparation and Finishing

Technique Guide



Buy Direct. Buy Brasseler USA.